

The texture of stone and wood reproductions varies in different areas in both pattern and colour. This is what gives them their true-to-life appearance. Stone designs consist of a natural stone reproduction, printed in high quality colours via a sophisticated procedure. The design is a replica of the natural stone and the variations in shade, colour and structural nuances present in the natural stone are therefore faithfully reproduced. These natural variations in shade and colour, which provide this design with its particular charm, may under certain circumstances be particularly evident in the area of the joint between two worktops. These variations are unavoidable with natural stone reproductions and are not due to a manufacturing defect. Owing to the manufacturing process, a texture that is continuous and uniform in colour at worktop joints is impossible. They merely emphasise the individual, natural character of the worktop.

Storage:

Worktops should always be stored at an ambient temperature of 18-22° C and a relative humidity of 50-65%.
Likewise, they should be stored in a horizontal position.
If worktops must be stored exceptionally in a vertical position, they should be stood on the rear edge.

Transport:

In general, the criteria listed under „storage“ also apply to transportation.
The transport protection should only be removed immediately before assembly.

Cutouts:

Cutouts should be performed exclusively with a manual surface milling cutter.
If compass saws must be used in individual cases, the corners must be bored out.
Sharp corners result in crack formation in the laminate and should therefore be avoided.

Ovens / Dishwashers:

Steam from ovens and dishwashers places heavy stresses on the worktop lower edge.
Damage due to humidity results over time.
For automatic opening dishwashers (Eco-Mode), no liability is accepted for damage caused by swelling.
Areas with increased levels of moisture should be protected against vapour with aluminum tape (AZ 1072).
Particularly important is the joint between edge band and the worktop.

Worktop edges:

Water or other liquids must be wiped away thoroughly from the worktop edging, otherwise the liquid may penetrate into the joint and result in swelling.
Important, it is essential to wipe the worktop lower edge too.

Worktop joins:

Water or other liquid must not be allowed to remain on the joint between two worktops.
In spite of the good seal, the humidity may penetrate after a period, resulting in swelling in this area.

Upstand:

Water must not run between the worktop and wall.
This is avoided by applying upstands during assembly.
The various upstand versions must be injected with sealing material.
(Principally in the sink and hob areas.)

Wood edging:

Worktop edging is subject to very high stresses.
The wood edging should therefore be sealed particularly thoroughly with acrylic or polyurethane lacquer.
Drops of water on the wood edging must be wiped away immediately.

Maintenance information for the consumer:

Humidity (water and other liquids, damp sponges) on the joints must be removed immediately.
Hot saucepans, baking trays or pans damage the laminate surface of the worktops.
Please therefore always use a mat.
Cutting on the worktops always results in scratches and a cutting board should always be used.
We recommend watersoluble household detergents to clean and care for synthetic worktops.
Wipe the surfaces evenly with a clean, damp, lint-free cloth.
Subsequently rub with a very slightly moistened window leather or Vileda window leather without exerting excessive pressure.

Important:

Never use scourers or solvents for nitrocellulose lacquer, acetone, nail varnish remover or similar products.
These products will leave smears that are difficult to remove.

Worktop decor 2021

Standard (S)



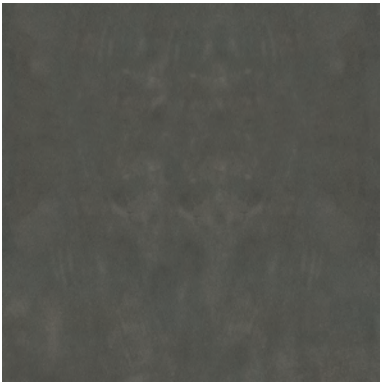
225 oxide



295 bronze



315 stone grey



320 dark cement



590 oak end-grain natural
Important: Different zones are very noticeable in decor and colour. Due to very noticeable colour differences not available with post-formed edge.



730 oak marcato



775 oak sepia



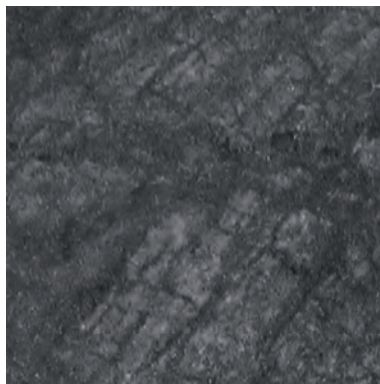
915 denver oak



1707 Concrete dark



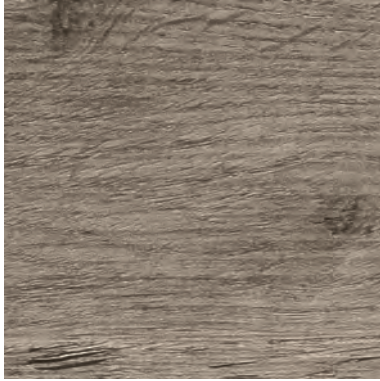
2106 Soapstone black



2109 Raja Slate Matt



2118 Catania oak
To suit surround decor 865 Catania oak.



2122 Catania oak grey-brown To suit surround decor 895 Catania oak grey-brown.



2134 Arlington oak natural



2142 arctic white
To suit surround decor 125 arctic white.



2147 Concrete natural



2148 Tessina



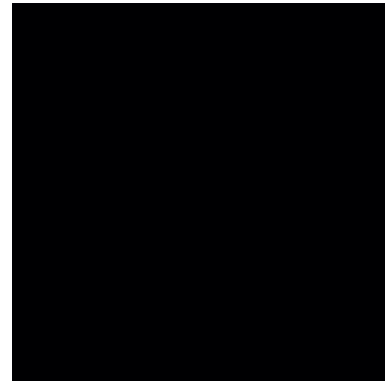
2150 Onyx grey
To suit surround decor 665 onyx grey.



2152 Cement grey
To suit surround decor 360 cement grey.



2155 light ceramic



2169 Black structure



2170 Arctic White structure To suit surround decor 125 arctic white.



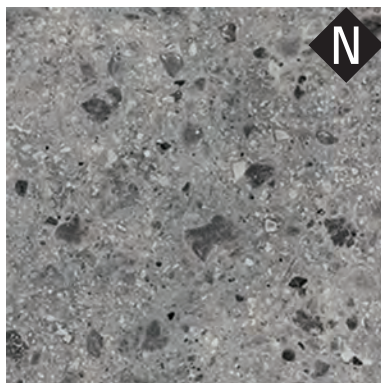
3150 Marble terramo



3160 stratus grey pearl



3170 Terrazzo Sorano



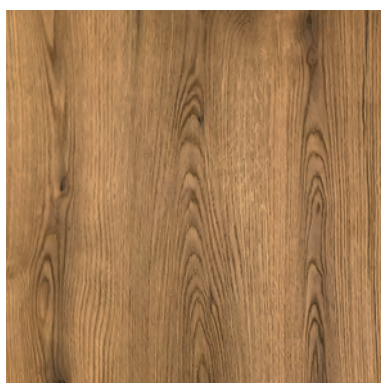
3260 Terrazzo grey



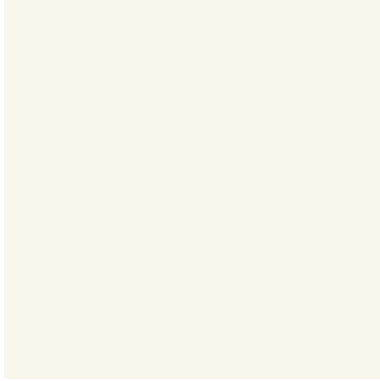
7010 light chestnut



8070 Vintage oak



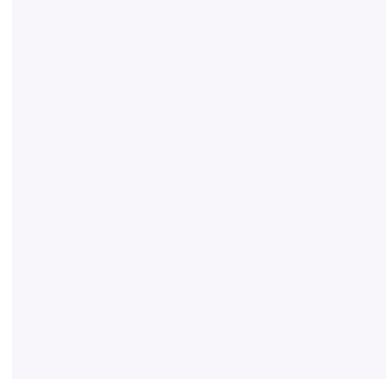
8080 Evoke Sunset



2160 Fenix arctic white

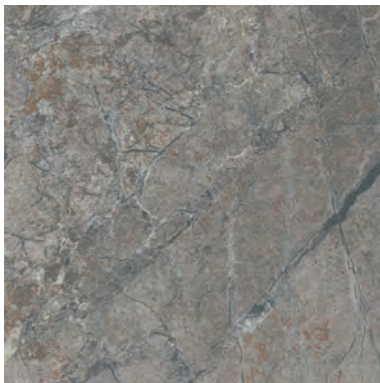


2161 Fenix Nero



2162 Fenix super-white

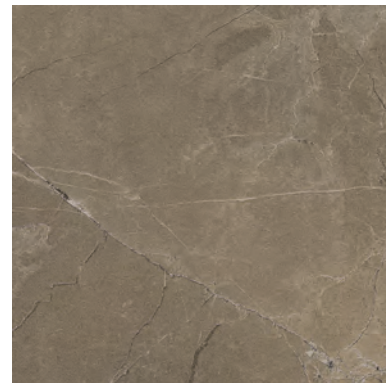
matt laminate (MX)



3070 Marble Breccia Paradiso



3080 Marble Carrara



3090 Marble el Greco



3100 Marble Roma

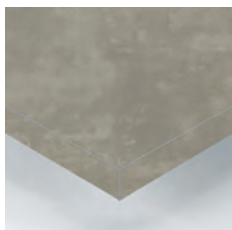
16 mm thick



A1...-16
 Front edge with PP edging
 1,5 mm thick.
 2 x R = 2 mm
 The recess height increases
 accordingly.

Edging in worktop finish

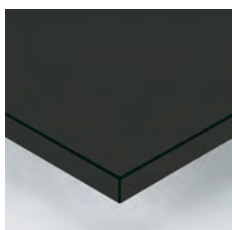
25 mm thick



A2...-16
 Front edge with PP edging
 1,5 mm thick.
 2 x R = 2 mm
 The recess height increases
 accordingly.

Edging in worktop finish

39 mm thick



A4...-03
 Front edge postformed.
 2 x R = 3 mm

Edging in worktop finish
 Not available in:
 320 dark cement
 and
 2152 Cement grey

Important:
 The following decors have
 radius 2 x R = 6 mm:

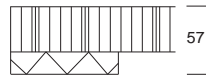
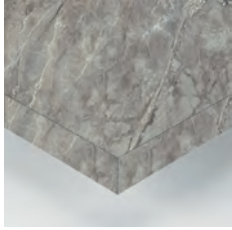
2009 White



A4...-16
 Front edge with PP edging
 1,5 mm thick.
 2 x R = 2 mm

Edging in worktop finish

57 mm thick

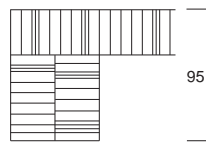


A6...-08

Front edge with laminate edging.
The appearance of a worktop 57 mm thick is achieved via the doubled frame construction.
The recess height is reduced accordingly.

Edging in worktop finish

95 mm thick



A10...-08

Front edge with laminate edging.
The appearance of a worktop 95 mm thick is achieved via the doubled frame construction.
The recess height is reduced accordingly.

Edging in worktop finish