

CREATE YOUR WORLD

ENVIRONMENTAL STATEMENT

pronorm Einbauküchen GmbH
Höferfeld 5-7
32602 Vlotho

pronorm
EINBAUKÜCHEN

TOPICS

1. Foreword by the management	4
2. Company portrait	6
a. Presentation	
b. Company history	
c. Company data	
d. Company activities	
3. Environmental policy and environmental performance	14
a. Environmental management system	
b. Environmental policy	
c. Environmental organisation chart	



4. Environmental aspects and environmental performance	20
a. Aspects (direct/indirect)	
b. Performance	
i. Input	
ii. Output	
c. Environmental goals (environmental programme)	
5. Co₂-Balance – Presentation of the overall result	29
6. Self-declaration	30
a. Declaration of conformity and next deadlines	
b. Contact person and contact details	
7. Declaration of validity	31





ROGER KLINKENBERG
Managing Director

THORSTEN GÖSLING
Managing Director

Great importance is attached to the protection of the environment at pronorm. For this reason, we already decided in 1996 to participate in the Council Regulation No. 1836/93 of 29th June 1993

on voluntary participation in a Community eco-management and audit scheme, in order to ensure environmentally sound production and further development of our company.

1 FOREWORD OF THE MANAGEMENT

We also comply with the requirements of the revised edition of Regulation (EC) No. 1221/2009 of the European Parliament and of the Council of 25th November 2009 on the voluntary participation by organisations in a Community eco-management and audit scheme - also known as EMAS III - are fully met by pronorm. This is made clear by the renewed validation of the environmental statement.

pronorm is prepared to assume personal responsibility in the area of ecology with regard to all activities and the possible consequences. To this end, our installed environmental management system has been brought to life and is constantly being further optimised.

An essential content of our system is the commitment to the continuous improvement of opera-

tional environmental protection. Through specially environmental programmes, we aim to fulfill this obligation. The management responsible monitors the implementation of the environmental programmes and documents the progress in the course of the working meetings with the management representatives.

The publication of this environmental statement is intended to inform the general public in detail about the environmental factors of our activities, our environmental policy, environmental goals and environmental programmes.

The contents of this environmental statement are checked by neutral environmental experts and documented in the form of a declaration of validity.

Vlotho-Uffeln, 9th June 2023



THORSTEN **GÖSLING**
Managing Director



ROGER **KLINKENBERG**
Managing Director

2 COMPANY PORTRAIT

A PRESENTATION

pronorm Einbauküchen GmbH is a company of the DMG Group in Waalwijk in the Netherlands. pronorm is the supplier for individually plannable fitted kitchen systems in the important middle and upper price segment.

pronorm Einbauküchen GmbH fulfils all the requirements of a brand culture. Since 2022, they have taken the next step in consolidating themselves in the market with their own brand i-luminate®.

The main market areas are Germany and the Netherlands. Furthermore, we export to the traditional kitchen export countries Belgium, Great Britain and Switzerland. In addition, the market in the USA has been opened up since 2022.

As a partner of the competent specialist trade for specialist kitchen trade, pronorm relies on the cooperation with the kitchen specialists.

With our comprehensive, wide-ranging and design-oriented fitted kitchens, we are clearly oriented towards the demands and wishes of our target groups.

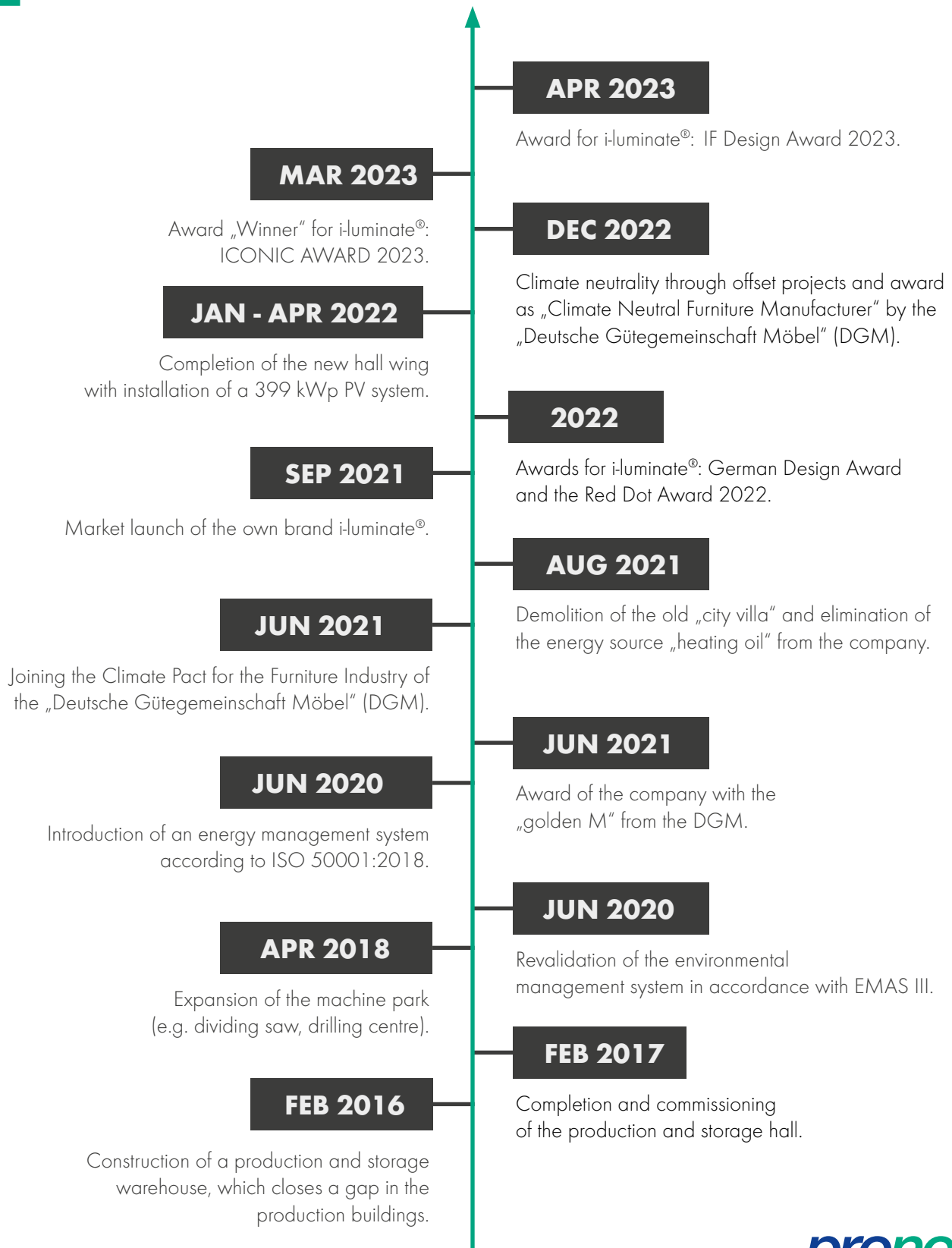
The guiding principle of customer orientation our actions.

Consistent customer orientation and the highest design and quality standards are our business philosophy.



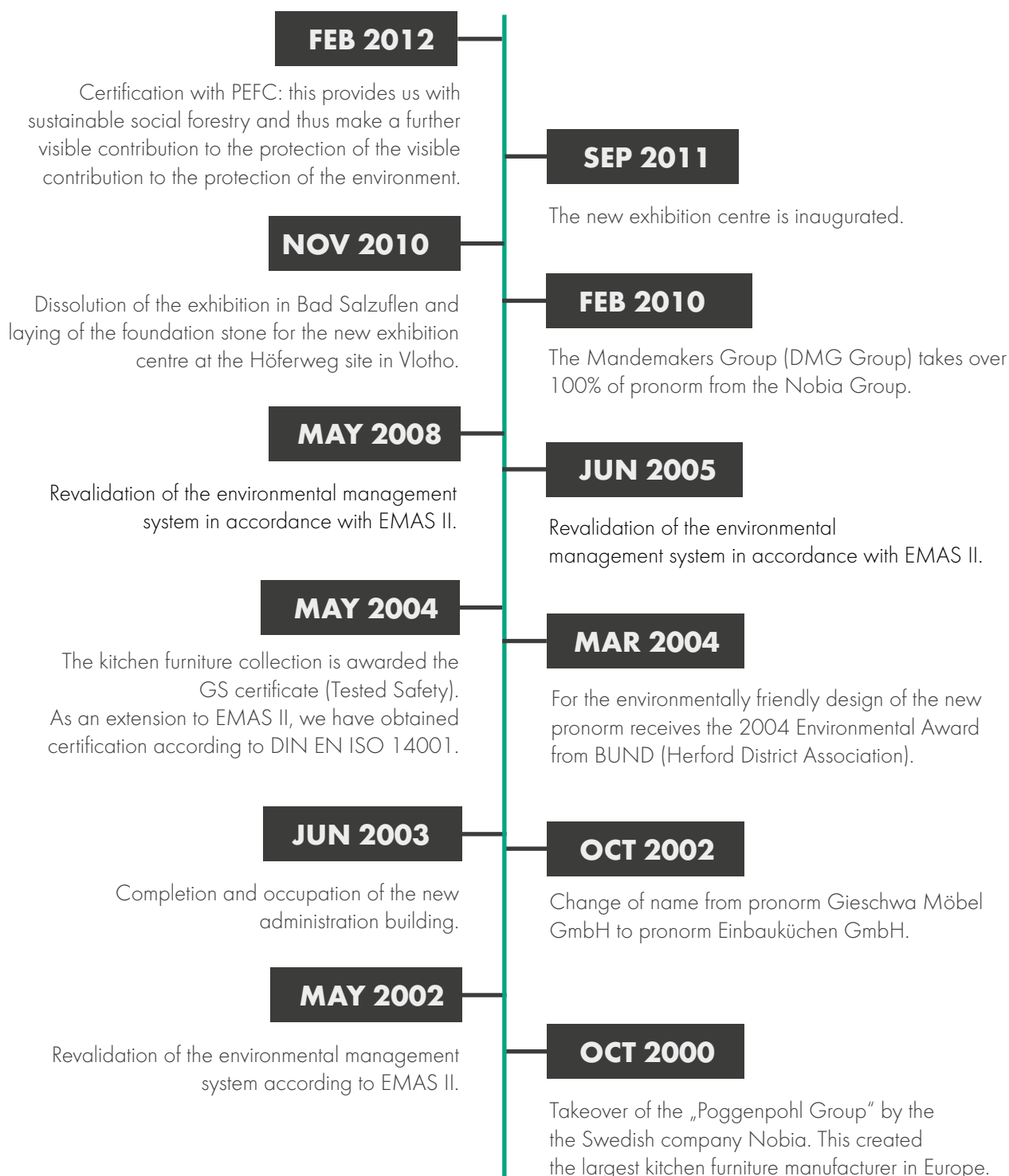
2 COMPANY PORTRAIT

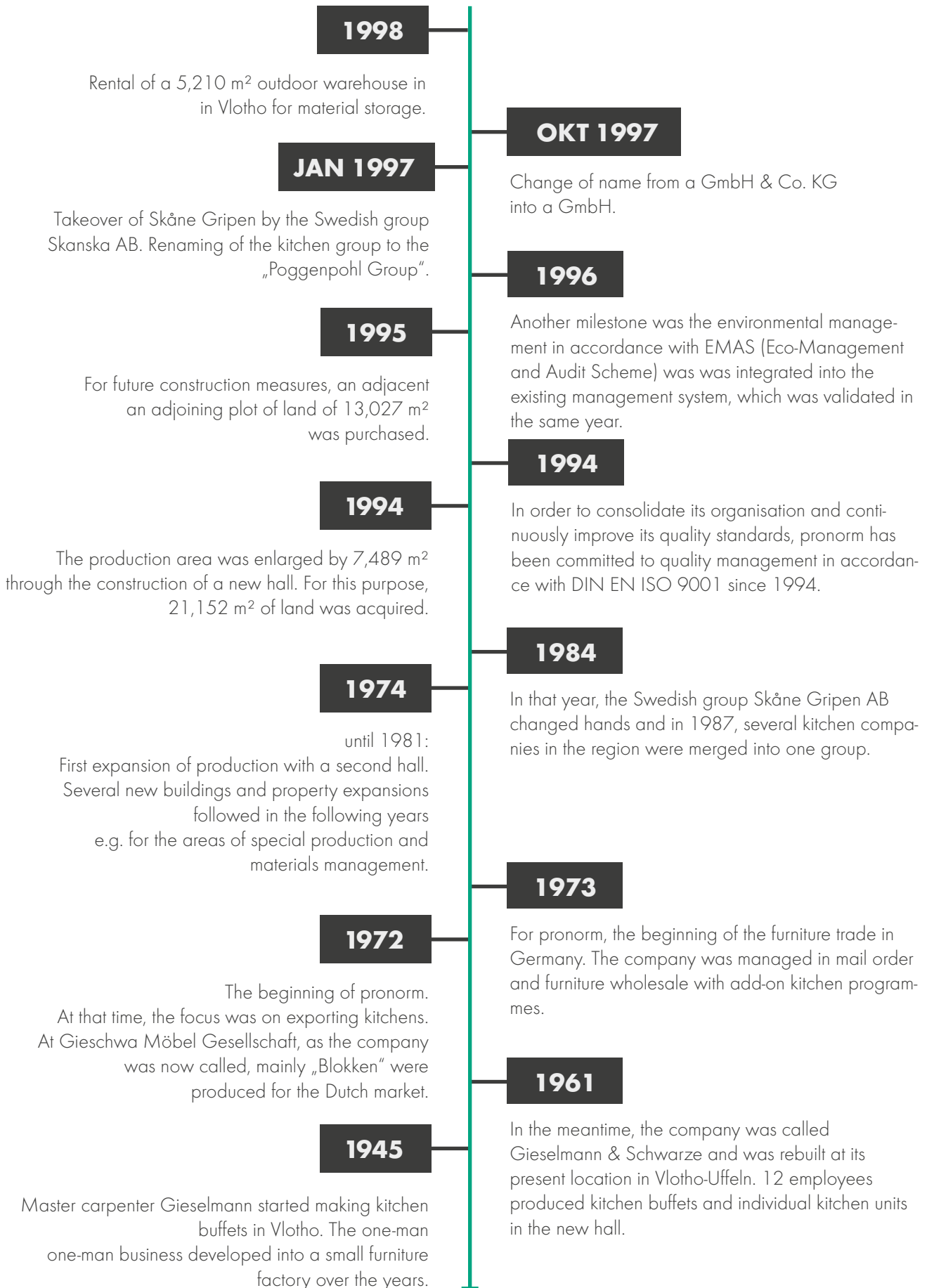
B COMPANY HISTORY



2 COMPANY PORTRAIT

B COMPANY HISTORY





2 COMPANY PORTRAIT

c COMPANY DATA

	2020	2021	2022
Average number of employees	306	311	331
Investments	2.280.353 €	4.548.258 €	11.967.312 €
Total area	63.915 m ²		
Built-up area	30.172 m ²		
Paved area	17.547 m ²		
Green area operation	4.991 m ²		
Green area administration	9.450 m ²		
Heated area	28.641 m ²		



2 COMPANY PORTRAIT

D CORPORATE ACTIVITIES

We produce our fitted kitchens at our site in Vlotho, in the district of Uffeln, Höferweg 28 and Höferfeld 5-7, which is located in a healing spring protection area of protection level IV for the health resort area of Bad Salzuflen / Bad Oeynhausen. This classification causes us to pay special attention to the corresponding environmental regulations.

Our premises are embedded in the floodplain of the river Weser, in the industrial area „Höferweg“, between a residential area on the Mindener Straße and a former gravel pond, which is used as fishing water.

For the transport of our products, the motorway A2 with the intersection „Bad Oeynhausen“ can be

reached in a distance of approx. 7 km.

There has been no previous commercial or industrial use of our company premises in the past, so there is no need to worry about soil contamination or contaminated sites.

The machine room department produces carcass sides and carcass shelves within the prefabrication. Fixed chipboard dimensions are trimmed to size, edged, drilled and doweled.

All wood chips and dust produced during processing are extracted and used to heat the production halls and the administration building.

The finished cabinet sides and shelves are fed to the assembly departments.





Approximately 15 % of the entire range of fronts is stored in the range of fronts, all of which are ordered from our suppliers as required. In accordance with our quality guidelines, all doors and drawer fronts of a kitchen are commissioned by our employees. Automatic handle and fitting pre-assembly is carried out on CNC-controlled door and drawer front drilling machines. The processed front parts are then made available on the assembly lines.

In the future, we will manufacture all base, wall, special and tall cabinets for about 155 individually planned fitted kitchens. The carcass sides and shelves are assembled

according to type and glued together.

Doors, drawers and pull-outs are assembled at the assembly workstations. For the most part, the desired interior fittings and cupboard accessories are already installed here.

The sturdy cardboard packaging offers protection against damage during further transport of the furniture.

In the dispatch department, up to 25 lorry cases are loaded with furniture every day. All parts of a fitted kitchen are stowed in the furniture cases according to commission. Only qualified forwarding agents are commissioned to deliver the kitchens to our customers.

3 ENVIRONMENTAL POLICY AND MANAGEMENT SYSTEM

A ENVIRONMENTAL MANAGEMENT SYSTEM

The environmental management system of the company pronorm meets the requirements of Regulation (EC) No. 1221/2009 of the European Parliament and of the Council of 25 November 2009 on the voluntary participation by organisations in a Community eco-management and audit scheme (EMAS) and environmental auditing (EMAS). In the course of updating the environmental statement Regulation (EU) 2018/2026 of 19th December 2018 has been taken into account.

The parallelism with quality management according to DIN EN ISO 9001, the environmental management management according to DIN EN ISO 14001 and the energy management according to DIN EN ISO 50001 means that all integrated internal and external procedures and processes in the management systems are regulated in a management manual.

Through the regular exchange of information in the management committee, in which all representatives of the individual systems participate, a constant improvement is achieved in cooperation with the individual departments. The individual departments, a continuous improvement of environmentally relevant data and facts is ensured.

In order to be able to achieve environmental objectives and goals, procedural instructions have been drawn up that regulate the development of environmental programmes.

The necessary information channels (procurement, processing and dissemination of information) are also laid down there.

The implementation of the programmes is monitored and controlled by the Management Officer. In the event of deviations, he or she corrective measures are initiated.

The management committee is a working group of pronorm Einbauküchen that implements the environmental policy defined by the management. The Management Committee is composed of the following members:

- Management Officer
- Environmental Management Officer
- Energy Management Officer
- Quality Management Officer

Internal audits / environmental audit:

In accordance with a defined system (audit plan), all areas with activities relevant to the environment are activities are checked for compliance with the defined procedures and processes. Any deviations found are documented in audit reports, Corrective measures are agreed upon, listed and evaluated by the management. All those responsible are constantly informed about the current status.



3 ENVIRONMENTAL POLICY AND MANAGEMENT SYSTEM

B ENVIRONMENTAL POLICY

pronorm Einbauküchen GmbH has drawn up its environmental policy on the basis of guiding principles. The core of our responsibility is the sustainable use of energy and resources. The continuous improvement of our environmental performance is as important to us as a high product quality, the increase of energy efficiency and the satisfaction of our customers and employees.

We are committed to meeting legal requirements related to our environmental aspects, resource use and energy consumption. Our environmental policy is determined by the following guiding principles:

1. ecological, economical, safe

Our goal is to manufacture safe products at a high quality level using economical and safe production processes and to market them successfully in a competitive environment. In doing so, economic benefits should not take precedence over human health and safety and the protection of the environment.

2. Responsibility in dealing with resources and environmental pollution

Our corporate responsibility includes developing products that are safe to use, using all resources sparingly and avoiding as far as possible any impact on the environment and our employees.

3. environmental protection from „top“ to „bottom“

For us, environmental protection is a management task. Supervisors play an important role as role models. Responsibility begins with the top management of our company. The divisional managers assume special responsibility for the realization of our environmental principles and ensure that they are maintained and implemented at all levels of the company. The management appoints representatives and committees for the introduction, maintenance and control of all measures with environmental relevance.

4. motivation for environmental awareness

Employees are trained in accordance with their tasks with regard to environmentally relevant issues in order to promote a sense of responsibility, motivation, and the ability to communicate, act and make decisions.

5. environmental performance in view

We consider the potential environmental impact as early as the development stage of products and processes. The environmental impact of our activities is registered, assessed and reduced to a minimum in a continuous improvement process. We are guided by the best available techniques in each case, while maintaining economic justifiability.

Compliance with legal requirements is a minimum criterion.

6. control and correction

Management, through its management representative, reviews the effectiveness of the management system, compliance with environmental policy, and fulfillment of the environmental program. To this end, past, current and planned activities are reviewed, as are aspects of non-conforming operation. Safety concepts form a basis for the further development and operation of our plants.

7. emergency organization

We undertake to prevent accidents or abnormal operating conditions that could harm the environment by means of suitable safety equipment and organizational measures. Together with the authorities, emergency plans are kept up to date in order to keep accident-related emissions low.

8. suppliers and service providers

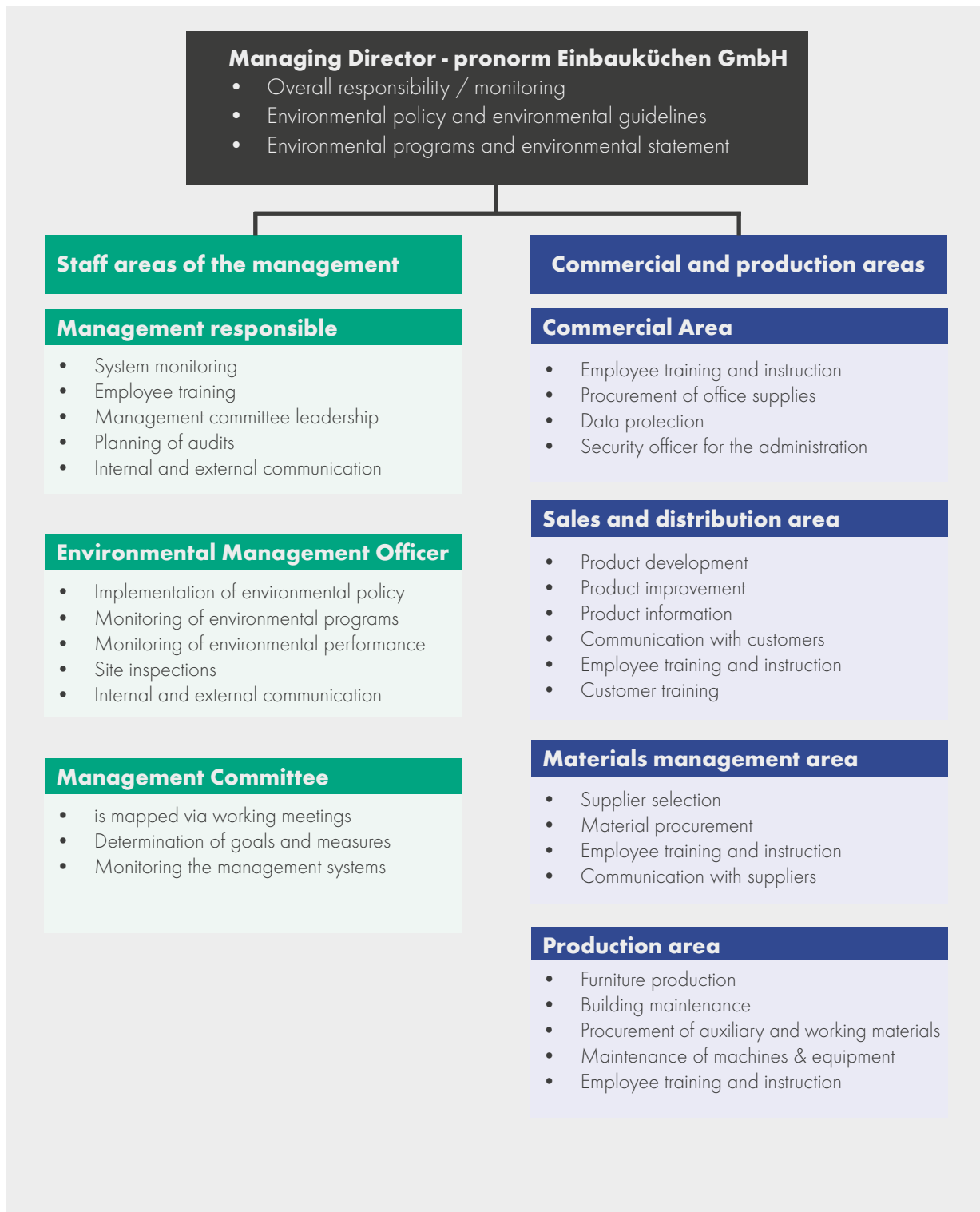
When we use services from other companies, we satisfy ourselves of the expertise and reliability of our partners. In particular, we involve our suppliers and service providers in our environmental efforts. Arrangements are made to ensure that contractors operating on our premises maintain at least the same high environmental standards as are customary in our company.

9. information policy

We are committed to an open dialog with employees, authorities and the public in order to achieve improvements and strengthen confidence in our responsible actions. We provide regular information on our environmental protection activities in an environmental statement.

3 ENVIRONMENTAL POLICY AND MANAGEMENT SYSTEM

C ENVIRONMENTAL ORGANIGRAM





4 ENVIRONMENTAL ASPECTS AND PERFORMANCE

Current assessment of the company's activities with regard to their environmental impact under normal operating conditions. Here, the direct environmental aspects are systematically recorded and evaluated with regard to their environmental relevance and influenceability according to the A, B, C analysis (high, medium, low). The evaluation is carried out annually, taking into account the current key environmental figures and the environmental programmes in a verbally argumentative manner.

Classification of environmental relevance compared to the previous year:

A = high environmental relevance, or if legal requirements are exceeded. In these cases, measures must be formulated (environmental programmes).

B = medium environmental relevance, if environmental indicators or balance sheet data deteriorate significantly.

C = low environmental relevance: no negative changes in environmental indicators or accounting data compared to the previous year.

Influenceability rating:

A = high influenceability: the prerequisites are technically and financially given.

B = medium influenceability, if the technical prerequisites are given, but these are outside the current budget.

C = low influenceability: technically no possibilities for change.

DIRECT ENVIRONMENTAL ASPECTS

Direct environmental aspect	Environmental relevance	Influenceability	Environmental impact: e.g. air pollutants, wastewater, waste, soil contamination, noise, heat, resource consumption
Noise			
external (Neighbourhood noise)	C	B	No special effects! Both the noise immission guideline values and the permissible peak levels are complied with at all measurement locations. An update of the noise level measurement was carried out and documented by the safety expert.
internal (production noise)	C	B	Low impact! The determination of the internal noise areas has been updated in 2021 and marked accordingly; hearing protection is provided free of charge to the employees working there.

The issue of noise and protection against it is regularly considered, assessed, updated and documented during the entire conversion phase of the company. The safety officer in the company is responsible for this.

Direct environmental aspect	Environmental relevance	Influencability	Environmental impact: e.g. air pollutants, wastewater, waste, soil contamination, noise, heat, resource consumption
Emissions			
Boiler house	B	A	The previous two boiler houses were replaced by a new modern one has been installed. The work was completed in the first quarter of 2023. In addition, all heating pumps were modernised and the running times were adjusted.
Gas heating administration	B	B	The basic heating load of the buildings is carried by the production by the wood-fired production plant. The gas condensing heating is only used to support demand and to provide hot water. water supply. The exhibition hall is heated by a gas boiler. In 2022, the gas quantities were significantly increased due to the modernisation of the boiler house.
Gas heating exhibition building	B	B	
Exhaust systems (I and II)	B	B	The rescheduling and modernisation of the extraction system in the company were completed. Due to the expansion of the of the production hall and additional machines and systems, consumption has not fallen despite more efficient systems.
General average:			
Fire: Extraction system	C	C	A spark extinguishing system is integrated into the piping of the spark extinguishing system.
Fire: Factory premises (total)	B	C	Neither machines nor materials pose any extraordinary environmental risks in the event of a fire. An incipient fire is contained by the sprinklers, and the extinguishing water retention is generously dimensioned. The municipal fire brigade is automatically alerted, and fire brigade personnel are fire brigade are briefed on the premises on an annual basis. The fire protection and emergency plan is currently updated by the safety expert.
Energy and resource consumption:			
Waste	C	C	Waste volumes are in good proportion to production volumes. A constant review of the use of more environmentally friendly packaging and materials is carried out. A waste officer will be appointed in the company from 2023.
Waste water	C	C	No particular impact. As no water is needed for production, only sanitary wastewater is produced.
Electricity (electr. energy)	C	B	The quantities of electrical energy consumed are rising continuously. This is mainly due to the expansion of production. However, the increased energy quantities were still low due to the continuous modernisations. The energy supplies were switched to green electricity and supplemented by generation using a PV system.
Resource consumption (wood)	C	B	No special effects! Wood is a renewable raw material. Wood from sustainably managed forests is used. The offcuts of the chipboard are used for energy recovery on site or by a service provider.

INDIRECT ENVIRONMENTAL ASPECTS

Indirect Environmental aspect	Environmental relevance	Influenceability	Assessment of the product-related impacts
Product range	B	C	Due to the market situation and the customer structure, there is only limited scope for influence.
Use of raw materials (development/procurement)	C	C	The wood content of our products comes from controlled economies that are managed and evaluated according to the PEFC certification system. 100% wood from sustainable forestry is used in the company.
Disposal after service life	C	B	No end customer contact, only industry solutions would be possible, currently only bulky waste disposal. pronorm is represented in the associations and actively participates in corresponding specifications.
Lifetime and repairability	C	C	In view of the high quality of the products and the modular design, which makes the kitchens easy to repair, long life cycles can be assumed. The possibility of influence is rather small as a result of fashion trends / innovation cycles.
Packaging	B	A	Cardboard is increasingly being used for packaging and transport protection. This is recyclable and can be reused immediately if necessary.
Transport	C	C	Only a small influence is possible through pronorm-sided freight forwarder evaluations.
customer information, environmental	C	C	Only dealer specifications; direct influence by and on end customers is only slightly possible.



4 ENVIRONMENTAL ASPECTS AND PERFORMANCE

B PERFORMANCE

This page lists key environmental figures relating to, for example, the number of employees, the number of furniture types produced, the amount of waste produced and the calendar year. The amount of waste produced and the calendar year. The year under review is compared with the two compared. The trend of the past 3-year period is shown.

Description of the key figure	2020	2021	2022	Comment
Average electricity consumption per furniture type (in-house production) [KWh/type].	10,69	9,78	10,8	Electricity consumption is rising while production figures are increasing. However, due to various conversion and modernisation measures, significantly more was consumed over the year as a whole.
Packaging per furniture type [kg/type]	1,36	1,40	1,40	Despite an increase in production figures, packaging costs stagnated.
Compressed air generated per furniture type (in-house production) [m ³ /type]	8,78	8,53	9,2	The demand for compressed air has increased. This is due to an increase in the of the machine park that depends on compressed air.
Printer and copier paper consumption [sheets/employee]	11.859	11.576	12.387	On the one hand, the proportion of home offices was significantly lower in 2022. A new printing system was installed in the administration, which should optimise the printing behaviour of the employees. Digitisation was to be promoted for production.

In 2023, further key figures will be formed.

ENVIRONMENTAL ASPECTS AND PERFORMANCE

B PERFORMANCE **i** INPUT

Note in advance: Reasons for serious deviations from the previous year are listed in the table. The accuracy of some of the figures shown has been increased by decimal places in order to make changes more visible.

Input Höferweg 28 und Höferweg 5-7	2020	2021	2022	Comments
1. Raw materials (t)				
1.1 Chipboard, furniture fronts, MDF boards	22.349,67	24.137,64	24.861,77	Since 2018, pronorm has been supplied exclusively with wood from sustainable cultivation (PEFC).
1.2 PEFC wood (this quantity is part of 1.1)	22.349,67	24.137,64	24.861,77	
1.3 Woodchips	0	0	22,69	(additional purchase for heating purposes)
2. packaging (t)				
2.1 Paper, cardboard, carton	347,38	373,00	384,19	Significantly increasing production numbers and quality assurance measures (reduction of return numbers) have increased the packaging effort. Countermeasures are to be developed here in 2023.
2.2 Wood (base reinforcement etc.)	18,37	20,94	21,57	
2.3 PE corner protection	12,47	14,52	14,96	
2.4 Foils (PE bubble wrap, PE shrink wrap, etc.)	32,48	43,03	44,32	
2.5 Steel strapping	0,05	0,06	0,06	
2.6 PP strapping tape	8,91	8,91	9,18	
2.7 PP adhesive tape	3,36	3,70	3,18	
2.8 Wrapping film for shipping	3,43	3,91	4,03	
3. functional fittings / external fittings (t)				
3.1 Metals (hinges, screws, door handles etc.)	2.172,19	2.476,30	2.550,59	The key figure has risen in line with the increased production figure. The decision not to use plastic in production was maintained.
3.2 Plastic (e.g. door handles)	0	0	0	

Input Höferweg 28 und Höferweg 5-7	2020	2021	2022	Comments
4. auxiliary and operating materials (t)				
4.1 Varnishes, stains, hardeners, solvents (without merchandise)	0,078	0,089	0,092	Both key figures can be described as stable.
4.2 Glues, adhesives, cleaners	12,63	14,48	14,83	
5. water (m³)				
5.1 Rainwater utilisation	437	321	352	
6. energy / heat (MWh; t)				
6.1 Electricity (MWh)	3.341	3.258	3.692	Due to conversion measures (new production hall) and expansion of the machinery, electricity consumption increased significantly.
6.2.1 Heating oil (Villa heating) (t)	1,30	0	0	The building has been demolished and the oil heating system dismantled.
6.2.1.2 Heating oil (mobile heating container) (litres)		39,336	31.553	Mobile solution for additional heating due to decommissioning of KH 1 and modernisation of KH 2.
6.2.2 Heating gas (reserve heating administration) (kWh)	182.222*	134.628	381.206	The reserve heating system for the administration was shut down. The supply was ensured exclusively via the exhibition hall. More events and less home office made the numbers rise almost to pre-pandemic levels.
6.2.3 Heating gas exhibition (m³)	182.222*	102.319		
6.3 Wood chips (own production) (t)	1.365,55	1.031,49	1.236,69	The enlargement of the facility also resulted in higher consumption figures. In addition, 2022 was at times significantly colder than 2021.
6.4 Compressed air (m³)	2.741.823	2.841.834	3.139.722	The demand for compressed air has increased significantly. This is due to higher production figures. In addition, the compressed air-dependent machinery was expanded.

ENVIRONMENTAL ASPECTS AND PERFORMANCE

B PERFORMANCE ii OUTPUT

Note in advance: Reasons for serious deviations in values compared to the previous year are listed in the table. Since 2023, pronorm Einbauküchen GmbH has employed a waste management officer, who was also responsible for processing the figures from 2022. In the future, further optimisation measures are planned in the area of waste generated. However, in the ongoing modernisation and conversion process in the company, more waste is generated in some areas than would be expected in a „normal year“.

Output Höferweg 28 und Höferweg 5-7	2020	2021	2022	Comments
1. products (pieces; t)				
1.1 Furniture type (pieces)	312.441	339.480	340.714	Renewed production increase of 2.1 %
2. waste for recovery (t)				
2.1 waste for recovery requiring special supervision -decayed-				
2.2 Waste for recovery not requiring special supervision				
2.2.1 Wood-based materials (without PVC)	33,96	19,46	40,52	Key figures without delivery for energy recovery
2.2.2 Wood-based materials (with PVC)				
2.2.3 Waste paper, cardboard, carton (incl. shredding)	95,54	115,6	115,21	---
2.2.4 Metal	11,05	24,73	159,81	Increased quantities due to demolition of villa and construction of new hall
2.2.5 Films (plastic packaging), incl. plastic strapping, rigid foam and small plastic parts	10,28	15,66	7,54	The key figure has dropped significantly again due to optimisations in the supply chain.
2.2.6 Wood packaging	46,14	54,08	46	
2.2.7 Electronic equipment	1,04	0	0	This type of waste is not disposed of annually.
2.2.8 Bulky waste (unassembled furniture)	19,64	41,15	0	(key figure dependent on measure) Increased quantities due to demolition of villa and construction of new hall
2.2.9 Concrete	7,56	4,32	40,25	
2.2.10 Construction waste	45,68	10,46	97,2	



Output Höferweg 28 und Höferweg 5-7	2020	2021	2022	Comments
2.2.11 Mixed municipal waste (collected mixed)	55,31	51,4	55,31	---
2.2.12 Mixed packaging	69,9	51,76	59,59	---
2.2.13 Bottom ash and boiler ash, incl. fly ash	13,27	19,42	11,56	<p>Note: Ashes are watered before transport to reduce dust formation during tipping. Manual watering can cause significant fluctuations in the weight quantity. The period delimitation can also have an influence on the quantity.</p> <p>Only one boiler house was in operation. In addition, heating was provided with fuel oil during the modernisation work.</p>

3. waste for disposal (t)

3.1 requiring special supervision for disposal

3.1.1 Oils, oil-containing absorbents, etc.	-	-	-	There is no annual disposal process.
3.1.2 Paints, lacquers (t)	-	-	0,47	
3.1.3 Toner waste	-	-	0,04	
3.1.4 Contaminated packaging	-	-	0,43	

4. Waste water (m³)

--- not applicable	3.158	1.668	2.146	
--------------------	-------	-------	-------	--

The emitted emissions can be found in the greenhouse gas balance 2022, which is updated and published every two years. In general, it should be noted that additional output (waste) is associated with the conversion and modernisation measures.

4 ENVIRONMENTAL ASPECTS AND PERFORMANCE

C ENVIRONMENTAL GOALS (ENVIRONMENTAL PROGRAMME)

UZS-Nr.	Required environmental objective	Associated environmental guideline	Individual targets / measures	Status
2019-1	Conversion of the entire lighting system to LED technology (incl. smart switching)	Guiding principle 2: Responsibility in the use of resources and environmental impact.	Successive replacement: Fluorescent tubes replaced with economical and long-lasting LED lighting.	Approx. 85 % of the old lighting technology has been replaced.
2020-1	Reduction of primary energy use in production	Guiding principle 2: Responsibility in the use of resources and environmental impact.	Reduction of electricity consumption of the extraction system and increase in efficiency, implementation planned by 2023.	Initial plans will be taken into account in the course of the conversion of the production. Complete conversion planned by 2022.
2020-2	Reduction of primary energy consumption in production	Guiding principle 2: Responsibility in the use of resources and environmental impact.	In future, only one boiler house will be operated. New planning underway. Implementation in summer 2022.	Boiler house II has been modernised. In addition, all heating pumps were replaced with new, efficient ones. An intelligent control system regulates the energy flows of the heat supply.
2021-1	Climate-neutral furniture manufacturer	Guiding principle 1 - Ecological, economical, safe.	Joining the DGM climate pact and neutralising the company's CO ₂ emissions.	Climate neutrality has been achieved. The DGM seal of approval has been acquired.
2021-2	Insulation of the outer facade, production	Guiding principle 1 - Ecological, economical, safe.	In the course of the construction of a new production hall, the existing building is also being newly insulated.	On the exterior façade, „80 - 100 mm“ external external insulation was applied. 90 % completed. The east side will be insulated until 2024.
2022-1	Reduction of electricity consumption in production	Guiding principle 2: Responsibility in the use of resources and environmental impact.	In the course of batch size 1, carcass production and replacement of new machinery and equipment with high-efficiency motors.	Planning started in 2021. Completion expected by the end of 2023.

5 CO₂ BALANCE - PRESENTATION OF THE OVERALL RESULT

Results

In total, the company issues in the year under review	1.267,00	tons of CO ₂ e
Converted per employee, this results in a value of	3,83	tons of CO ₂ e
Partial result: Scope 1 and 2	320,55	tons of CO ₂ e
Partial result: Scope 3	945,56	tons of CO ₂ e
CO ₂ e per km business trip	0,20	Kg CO ₂ e
CO ₂ e per employee commuting	1,36	tons of CO ₂ e

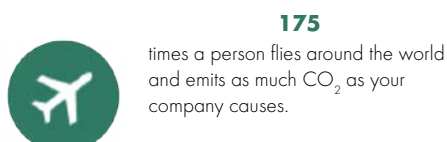
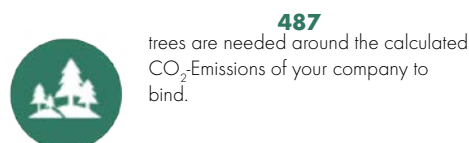
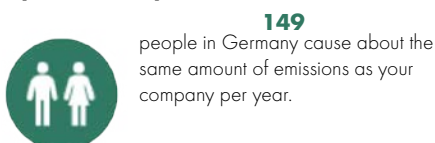
Compared to other companies of your size and industry, the emission value per employee is in the **lower** range.

Summary table of the results

Assignment	Emissions by category	[t CO ₂ e]	%-Portion
Scope 1	Heat consumption	165,14	13,04%
	Fuel consumption in the company	155,41	12,27%
	Gas leaks (Refrigerant)	0,00	0,00%
	Direct emissions from industrial processes	0,00	0,00%
	Total	320,55	25,32%
Scope 2	power consumption	0,00	0,00%
	district heating / district cooling	0,00	0,00%
	Total	0,00	0,00%
Scope 3	Upstream energy-related emissions	223,71	17,67%
	Business trips and hotel accommodation	37,56	2,97%
	Work routes and home office of the employees	428,70	33,86%
	Water / Waste generation in the company	145,45	11,49%
	paper consumption	30,27	2,39%
	Consumables production	31,25	2,47%
	Third party exchange logistics	0,00	0,00%
	Hardware	48,63	3,84%
	Total	945,56	74,68%
Total		1.266,11	100%

The overview of the results of the corporate carbon footprint reveals that at **pronorm Einbauküchen GmbH** above all, the emission category **commuting and home office of the employees** makes a significant contribution the overall balance. But also in the emission categories **upstream energy-related** emissions, as well as **heat consumption** and **fuel consumption in the company** result in greenhouse gas emissions.

Your footprint in comparison



6 SELF-DECLARATION

pronorm Einbauküchen GmbH confirms that all legal requirements and those of the EMAS Regulation have been met. In addition, an accredited environmental verifier has reviewed the environmental management system for the pronorm Einbauküchen GmbH site and declared this updated environmental statement to be valid.

Deadline for the next simplified environmental statement: 30th June 2024

Date for the next consolidated environmental statement: 30th June 2023

Further information on this environmental statement and on our environmental work can be obtained from:		Publisher of Environmental statement: <i>pronorm Einbauküchen GmbH</i> Höferfeld 5 - 7 32602 Vlotho Tel.: 05733-979-0
Herrn Thomas Brüning Management representative Tel.: 05733-979-155 Fax: 05733-979-4155 E-Mail: thomas.brueining@pronorm.de	Herrn Daniel Steube Environmental Management Officer Fax: 05733-979-4391 E-Mail: umb@pronorm.de	Herrn Thorsten Gösling Managing Director Tel.: 05733-979-391 Fax: 05733-979-4391 E-Mail: thorsten.goesling@pronorm.de

7 VALIDATION

DECLARATION OF THE ENVIRONMENTAL VERIFIER TO THE ASSESSMENT AND VALIDATION ACTIVITIES

The undersigned environmental expert Michael Frink,

EMAS environmental verifier with registration number DE-V_0088 accredited and approved for the area ...C31.02 (NACE code), confirms that the site or the entire organization, as stated in the updated environmental statement of the organization

pronorm Einbauküchen GmbH
Höferfeld 5 - 7
32602 Vlotho
for the location Vlotho-Uffeln

with registration number DE-108-00095

specified, all requirements of Regulation (EC) No. 1221/2009 of the European Parliament and of the Council of November 25, 2009 on the voluntary participation of organizations in a Community Eco-Management and Audit Scheme (EMAS), Regulation (EU) 2017/1505 of August 28, 2017 amending Annexes I, II and III, as well as Regulation (EU) 2018/2026 of December 19, 2018 amending Annex IV.

By signing this declaration, it is confirmed that the assessment and validation were carried out in full compliance with the requirements of Regulations (EC) No. 1221/2009, (EU) 2017/1505 and (EU) 2018/2026, the result of the assessment and validation confirms that there is no evidence of non-compliance with applicable environmental legislation, the data and information in the updated environmental statement of the organization gives a reliable, credible and true picture of all activities of the organization within the scope specified in the environmental statement.

(This declaration cannot be equated with an EMAS registration. EMAS registration can only be carried out by a competent body in accordance with Regulation (EC) No. 1221/2009. This declaration may not be used as a stand-alone basis for informing the public.)

Gütersloh, 16th June 2023



Michael Frink
environmental verifier
DE-V-0088

PURVerklebung



pronorm Einbauküchen GmbH
Höferfeld 5 - 7
32602 Vlotho

info@pronorm.de
www.pronorm.de

pronorm
E I N B A U K Ü C H E N