



PURVerklebung



PUR-bonded adhesive

On all formed edging the edgebanding is with a PUR-Bonded adhesive. Bonding is on carcasses, fronts and surround material.

Quality advantages:

Improved thermal resistance through physical/chemical setting. (e.g. also through extreme heat influence) Optimum protection against moisture intrusion.

Emissions class

The high quality standard of product includes the observance of allowable formaldehyde limits in all materials and components. Through an appropriate selection of raw particleboard as well as the corresponding surface coating and in addition also including the edging, the upper limits of E05 emission values are strictly adhered to, respectively fall well short of these (Emissions class E05 = 0.05 ppm = parts per million = 0.05 parts formaldehyde in 1 million parts of air). The chipboards used in carcass construction are so, that these are prepared corresponding to the raw chipboard E05 provisions, thus any subjective risks are excluded.

certified safety

Our company's products are certified with the GS symbol for tested safety from an accredited test institute.



Quality- and environmental management

Documented quality management (DIN EN ISO 9001) and environmental management (DIN EN ISO 14001/EMAS) in order to guarantee and fulfil our quality standards and as proof of the implementation of regulations and laws relevant to the environment and as a standard for an environment-friendly service.



PEFC-Seal

Timber and paper products with the PEFC seal are from sustainable, carefully managed forestry. More at www.pefc.co.uk.

General care instructions

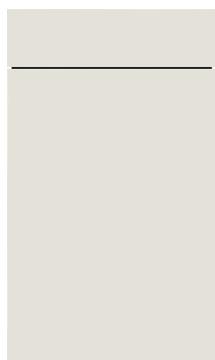
This section contains information on points to be observed in the daily care of your high-quality kitchen. The various materials and surfaces in a kitchen are generally very easy to clean and care for. This includes some fundamental information on the normal use of your kitchen.

Kitchen fronts may only be cleaned with a mild, water-soluble household agent; these are explicitly recommended for kitchen furniture in your product information. Never use aggressive agents, abrasive cloths, cleaners or sponges, such as scouring powder, steel wool or pan scourers. Never use disinfectants or solvent-based cleaning agents, such as cellulose thinner, acetone, nail varnish remover etc. A steam cleaner or running water should not be used. Moisture, water and heat damage will invalidate the guarantee and warranty claims. The cleaning agent intended for use must first be tested in an inconspicuous place. Do not use any polishes or waxes.

As a general rule:

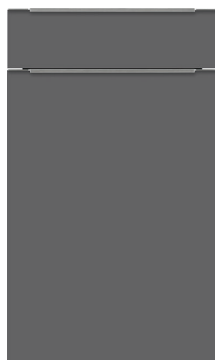
To prevent damaging the surface, the protective film should not be removed **until** assembly work is complete. Clean your fronts regularly with a soft, lint-free, moistened cloth or a soft sponge. Carefully **wipe the fronts dry immediately** after cleaning. Always ensure that all surfaces are dry. Moisture / water residues may cause permanent damage.

Do not use any aggressive scouring agents/powders, steel wool, polishes, (bees) wax, furniture cleaners, products containing strong acids and steam cleaners or dirty cloths. Both these, and cloths or cleaning sponges that are too coarse and have rough sides will produce shiny streaks or patches if rubbed too harshly on the surface and may permanently damage it. Greasy marks should also be removed without delay. Dried-on greasy / oily or tomato juice residues may cause permanent damage / stains / shiny streaks if left on for too long.



Synthetic layered fronts (MC/TU, SH/ BU, NA/ VA, NH, VH, NU/ VU, WS)

- a) Please observe the above **GENERAL CARE INSTRUCTIONS**.
- b) Use a dirt sponge („magic eraser“) to remove **stubborn soiling** (old grease residues etc.). Moisten it with an alcohol-based glass cleaner and smooth over evenly and using sweeping movements. Move the eraser over the surface evenly and **with gentle pressure**. DO NOT SCOUR, and ensure that the eraser remains **MOIST**. Then wipe dry with a microfibre cloth.



Ultra matt lacquer (AP/ MP, AH/ MH) Organic glass (glossy / matt) (OS, OT, PS, PT)

- a) Please observe the above **GENERAL CARE INSTRUCTIONS**.
- b) Use a dirt sponge („magic eraser“) to remove **stubborn soiling** (old grease residues etc.). Moisten it with an alcohol-based glass cleaner and smooth over evenly and using sweeping movements. Move the eraser over the surface evenly and **with gentle pressure**. DO NOT SCOUR, and ensure that the eraser remains **MOIST**. Then wipe dry with a microfibre cloth.



High-gloss and matt lacquer fronts (High gloss: LK/FK, LH; matt lacquer: MK/AK, LM; RI/SI, MA/KA, MU/KU, MT, WA, effect lacquer: ME)

- a) Please observe the above **GENERAL CARE INSTRUCTIONS**.
- b) **For stubborn marks:** Wipe a cotton cloth with alcohol-based glass cleaner evenly over the surface using sweeping movements, then wipe dry.
- c) Avoid the use of dirt erasers and microfibre cloths. Never use excessively hard cloths (e.g. linen cloths, paper, old jersey materials with hard seams etc.) as they may scratch the surface. Shiny areas may occur on matt lacquered fronts.
- d) **Note:** UV lacquered fronts (high gloss) do not achieve their final colour until the protective film is removed and they are exposed to light. This can take up to 4 weeks.



Mineral compound in concrete look (DB)

- a) Please observe the above **GENERAL CARE INSTRUCTIONS**.
- b) Use a cloth and a little washing-up liquid to remove effectively **stubborn soiling** (old grease residues etc.).
- c) Avoid the use of dirt erasers and microfibre cloths. Never use excessively hard cloths (e.g. linen cloths, paper, old jersey materials with hard seams etc.) as they may scratch the surface. Shiny areas may occur on matt lacquered fronts.



Ceramic (CA, CB)

- a) Please observe the above **GENERAL CARE INSTRUCTIONS**.
- b) Use a dirt sponge („magic eraser“) to remove **stubborn soiling** (old grease residues etc.). Moisten it with an alcohol-based glass cleaner and smooth over evenly and using sweeping movements. Move the eraser over the surface evenly and **with gentle pressure**. DO NOT SCOUR, and ensure that the eraser remains MOIST. Then wipe dry with a microfibre cloth.
- c) **Avoid** inappropriate collisions with sharp, pointed or hard objects. This could result in damage or breakage, as glass and ceramic are highly resilient, very hard materials.



Real wood fronts (ED, EE, EL, EV, ER, KD, KG, KL, EI)

- a) Please observe the above **GENERAL CARE INSTRUCTIONS**.
- b) **For stubborn marks:** Wipe a cotton cloth with alcohol-based glass cleaner evenly over the surface using sweeping movements, then wipe dry.
- c) Avoid the use of dirt erasers and microfibre cloths. Never use excessively hard cloths (e.g. linen cloths, paper, old jersey materials with hard seams etc.) as they may scratch the surface. Shiny areas may occur on matt lacquered fronts.
- d) **Note:** Wood and wood veneer are natural products, and are subject to the effects that occur in nature. Solid wood and wood veneer surfaces are specially processed to prevent dirt from penetrating the wood. These surfaces are subject to the natural discoloration that is caused by light. As a living material, wood will move if it is constantly exposed to extremely moist or dry air.



Laminate worktops

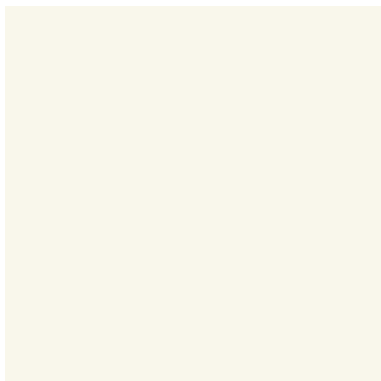
Laminate worktops must be cleaned regularly. Any standard household cleaner can be used for this purpose.

Clean the worktops with warm (hand-hot) water with the addition of some household cleaner. Using lukewarm or cold water can cause discolouration and unsightly streaks on the surface. A soft cloth or sponge should be used to apply the water/cleaning product. Dry off with paper towel.

Note:

Never use scouring / sanding products, detergents containing acid or strong acids / salts, steel wool or dirty cloths. Your kitchen will suffer if pools of water are left to stand for any length of time or if damp sponges or cloths are left lying on the butt joints between worktop panels. Always remove them straight away and wipe dry.

Do not place hot pans, pots or baking sheets directly on the laminate worktop – always use a pot stand. Avoid cutting directly on the laminate worktop. We recommend always using a chopping board. Damage caused by improper use of the laminate worktop will invalidate the warranty and result in the loss of your warranty rights.



FENIX® worktops

To ensure that the positive properties of the surface are permanently maintained, we recommend cleaning large areas with a moistened protective eraser.

General care instructions

Although FENIX®-APL is highly resistant to abrasion and scratching, no abrasive or scouring substances or sponges, or sandpaper or steel wool should be used for maintenance.

The use of substances with highly corrosive or alkaline ingredients should be avoided.

Avoid using furniture polish or regreasing cleaners, as this may leave behind a film on the surface that will later cause soiling.



Special care instructions and repairs

Please follow the link below and refer to the instructions listed there:

<http://www.fenixntm.com/de/maintenance>



Cutlery inserts

Please remove the cutlery insert from the drawer to clean it. The same care instructions apply as for plastic fronts. See chapter: Synthetic layered fronts

In general, any soiling caused by crumbs and dust can be removed with the soft nozzle of a Hoover.



Damp and heat

Ensure that clouds of water vapour do not come into direct contact with the furniture elements. If visible signs of moisture are observed (droplets of water etc.), the moisture must be removed immediately using a dry cloth.

Note:

Never operate e.g. kettles, coffee machines or taps with a boiling water function beneath wall units. The steam may cause permanent moisture / swelling damage.

Leave dishwasher doors closed for at least 30 minutes after the end of the programme. The automatic door opening function of some appliances for speeding up the drying programme is incompatible with the durability of the kitchen furniture.

If wall units are installed above the hob, it is essential to ensure that rising moisture is removed by means of extraction.

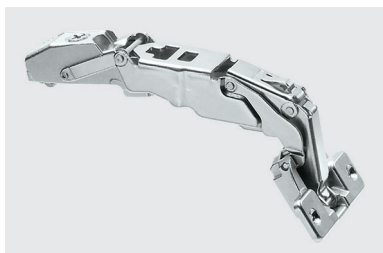
The hot steam should not come into contact with items of furniture, as this may lead to (moisture) damage in the long term. If steam does happen to condense on items of furniture, please dry them immediately.



Handles and knobs

Remove any soiling immediately, if possible. In most cases, cleaning agents will not be needed. Soiling can usually be removed without difficulty using hand-hot water and a soft cloth. If necessary, an even better result can be obtained by adding a dash of washing-up liquid to the water. Do not use any caustic household cleaners and abrasive or scouring cleaners. Then wipe the surface of the handle until it is dry.

Waxes, polishes and solvents must not be used to clean the surface of handles. When using microfibre cloths, please note the manufacturers' instructions, as such cloths have very different surface textures which can damage the surface of the handles. Steam cleaners must not be used.

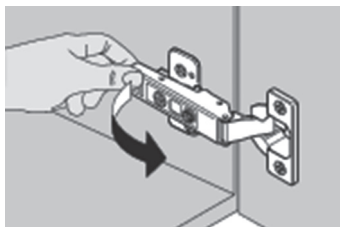


Moving parts:

The life of moving parts, hinges and other moving fittings can be extended with occasional cleaning.

Moving parts should be given a drop of resin-free oil every two years. The runner components of pharmacy-style tall units must not be oiled. Dry dirt can be wiped off them with a dry cloth. If necessary, stubborn dirt can be removed with a little glass cleaner and a dry cloth. However, moving plastic parts should never be greased or oiled.

Note: Be sure to keep drawer and pull-out runners clean. In particular, remove crumbs and dirt particles immediately with a paintbrush or the soft brush attachment of a vacuum cleaner. Dirt can prevent moving parts from working (correctly).



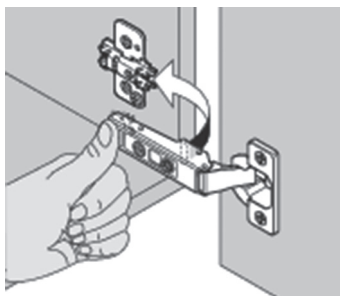
Unhook hinge

Tools are not required to disassemble the hinge.

Pull the locking lever at the end of the hinge and lift the hinge arm off the base plate.

Note:

Hold the front securely while unhooking the hinge from the base plate. It is also advisable to release the bottom hinge first, then the top hinge.



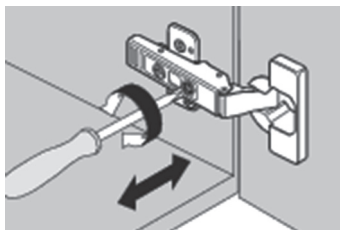
Hook in hinge

Tools are not required to assemble the hinge.

Place fixing web in the mount at the front of the base plate. Then place the hinge arm on the base plate and press lightly to engage it. When you hear a clicking noise, the hinge is securely attached.

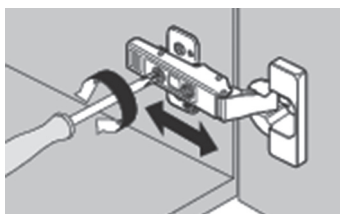
Note:

Hold the front securely while hooking the hinge into the base plate. It is also advisable to engage the top hinge first, then the bottom hinge.



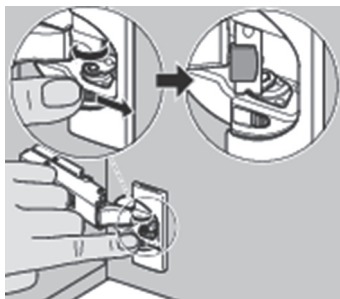
Lateral hinge adjustment

The front adjusting screw on the hinge arm is used to adjust the side gaps of the front.



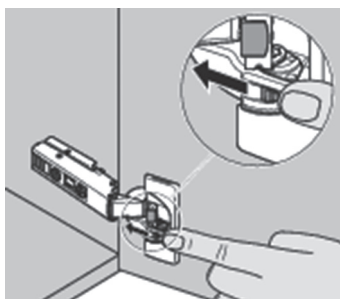
Hinge depth adjustment

The rear adjusting screw on the hinge arm is used to adjust the distance between the front and the carcass edge.



Activate hinge cushioning (Blumotion)

The small sliding switch on the hinge cup must be pushed outwards to activate the cushioning mechanism. The cushioning bar then jumps forwards.

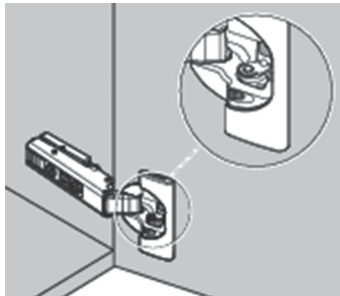
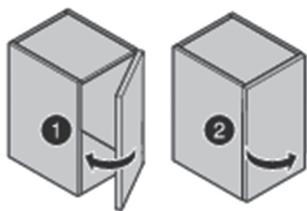


Deactivate hinge cushioning (Blumotion)

The small sliding switch on the hinge cup must be pushed inwards to deactivate the cushioning mechanism. When the door closes, the cushioning bar is pressed into the hinge cup and engages.

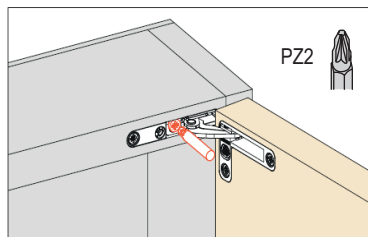
Note:

It may be advantageous to deactivate one or more hinge cushioning mechanisms on a door in the case of smaller or lighter fronts. That optimizes the door cushioning and enables smooth closing.

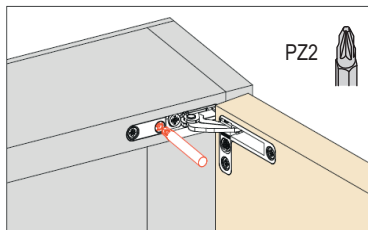


Adjustment of concealed hinges

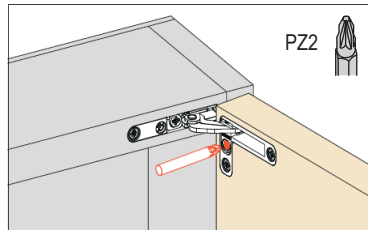
Turn the adjustment screw on the marked position by using a screw driver.



+ 2,0 mm / - 2,0 mm




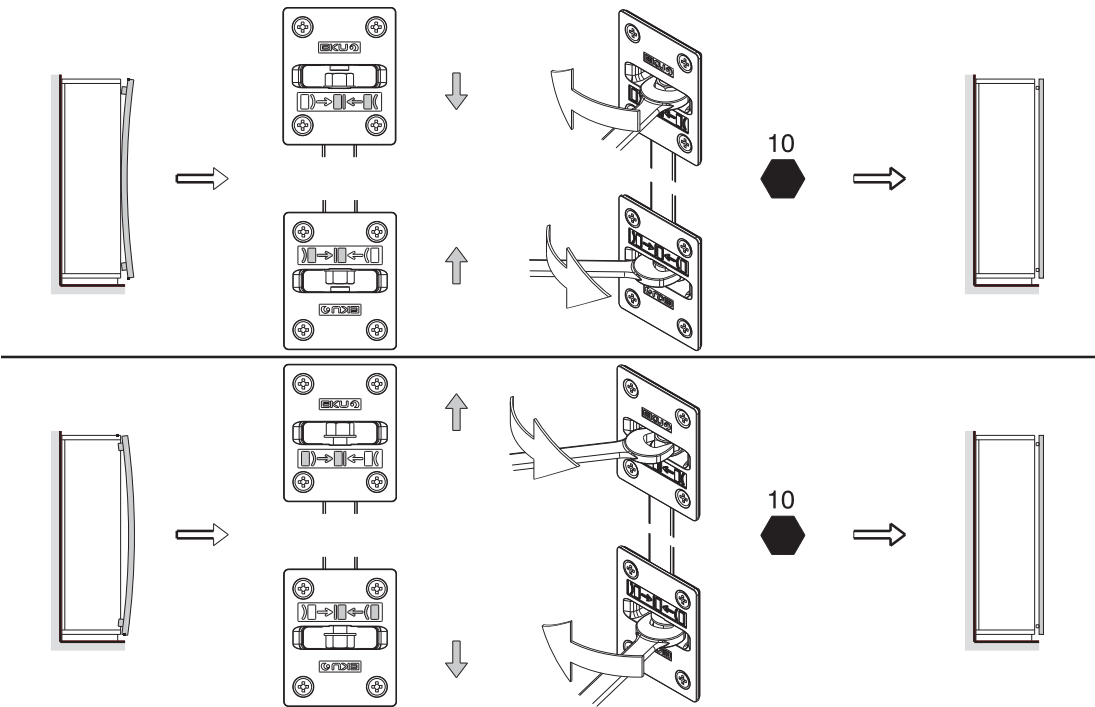
+ 2,0 mm / - 0,5 mm



+ 1,5 mm / - 1,5 mm

DE Montage: Möbeltüre justieren
FR Montage : Aligner les portes de meuble
EN Assembly: Adjust furniture door

-  DE Spannschraube oben und unten gleichmässig spannen
FR Tendre uniformément les vis de tension en haut et en bas
EN Tighten the tensioning screw at the top and bottom evenly



DE Montage: Optionale Abdeckkappe
FR Montage : Cache en option
EN Assembly: Optional cover cap



DE Demontage: Optionale Abdeckkappe
FR Démontage : Cache en option
EN Disassembly: Optional cover cap





Remove drawer or pull-out (ArciTech champagne-coloured)

The drawer / pull-out can be removed quickly and easily by first pulling it out completely and then lifting it straight up, holding either the handle or the front.

Note:

A loud cracking noise will be heard when the drawer or pull-out is released from the runner.



Install drawer or pull-out(ArciTech champagne-coloured)

To install the drawer or pull-out, simply place it on the inserted runners and push it shut. At that moment, the drawer is automatically connected to the runners. When the drawer is then re-opened and closed with a dash, an audible clicking sound indicates that the drawer/pull-out is now in its final position.



Release front drawer panel (ArciTech champagne-coloured)

Tools are not required to release the front drawer panel. For this purpose, simultaneously pull the two release levers under the drawer frame towards you. The front panel is then released automatically. In the case of a tall pull-out, the railing or side element must first be removed. In the case of drawers over 600 mm wide, the eccentric at the front bottom must also be released.



Attach front drawer panel (ArciTech champagne-coloured)

The front panel is also fitted without tools. Position the front panel in front of and parallel to the drawer. The panel is then drawn in and an acoustic signal indicates that it has engaged correctly.



Adjust drawer or pull-out front panel (ArciTech champagne-coloured)

First remove the plastic cover caps from both sides. This takes place without a tool. To adjust the front panel you will need a (Phillips) screwdriver. The height is adjusted by +/- 2 mm with the aid of an eccentric screw. Once you've heard the clicking sound, set up is complete. You can adjust the sides by +/- 1.5 mm on both sides using the adjustment screw provided. In the case of drawers over 600 mm wide, the eccentric at the front bottom must also be released.

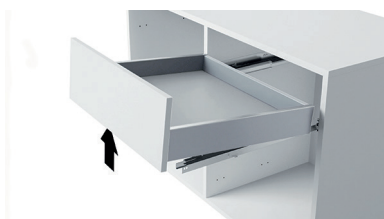
Please note:

To ensure that the front panel joins line up correctly it is essential to ensure that the drawer panels are adjusted in parallel, i.e., by the same amount at both sides. Adjustment in opposite directions can lead to malfunctions and impaired running properties.



Hook in / adjust front pull-out railing (ArciTech champagne-coloured)

The square side railing of the pull-out drawer should first be hooked into and engaged in the top outer corner of the pull-out rear panel. Then push back the grey plastic cap (see picture) and click it into the front adapter provided. A thin screwdriver can be inserted into the front adjustable part of the railing to adjust the angle of the pull-out front and thus align the front correctly. Finally, push the grey sliding cover up against the front panel until it audibly engages.

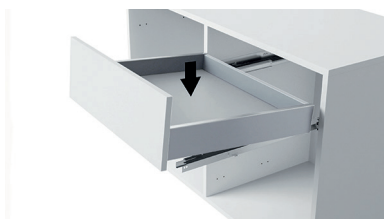


Remove drawer or pull-out (proTech 2)

The drawer / pull-out can be removed quickly and easily by first pulling it out completely and then lifting it straight up, holding either the handle or the front.

Note:

A loud cracking noise will be heard when the drawer or pull-out is released from the runner.



Install drawer or pull-out (proTech 2)

To install the drawer or pull-out, simply place it on the inserted runners and push it shut. At that moment, the drawer is automatically connected to the runners. When the drawer is then re-opened and closed with a dash, an audible clicking sound indicates that the drawer/pull-out is now in its final position.



Release front panel (proTech 2)

The front panel can be released by a screw driver.

Push the drawer side approx. 5cm towards the back to release the catches. The sense of rotation is printed on the catch element.

Drawer = 1 catch on each side

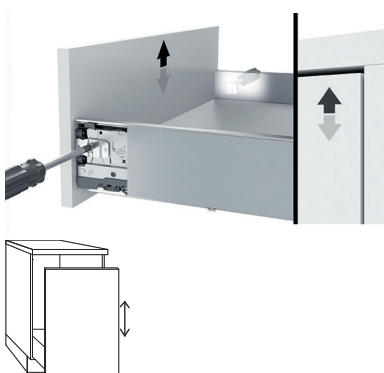
Pull-out = 2 catches on each side

The catches remain in this position and the panel can be unhooked.



Attach front panel (proTech 2)

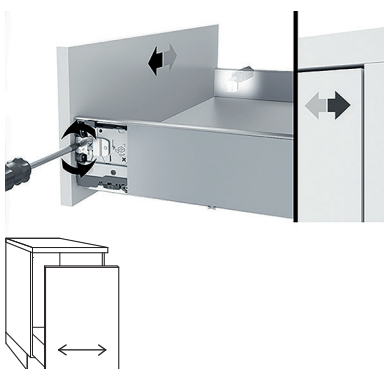
The front panel is fitted without tools. Press down the catches and hook in the panel, parallel to the drawer/pull-out. Push the panel up against the drawer/pull-out, applying gentle pressure. The panel is then drawn in and an acoustic signal indicates that it has engaged correctly. Then close the sides.



Height adjustment (proTech 2)

Turn the adjustment screw on the marked position by using a screw driver.

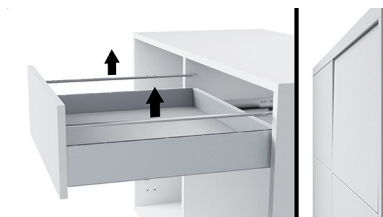
+/- 2,0 mm



Side adjustment (proTech 2)

Turn the adjustment screw on the marked position by using a screw driver.

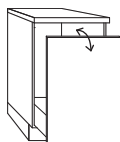
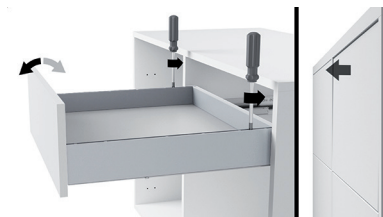
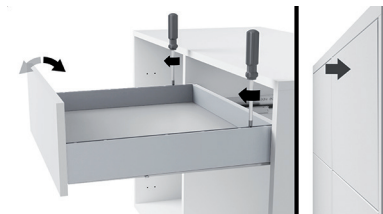
+/- 1.5 mm



Angle adjustment (proTech 2)

Turn the adjusting screw on the marked positions with a screw driver.

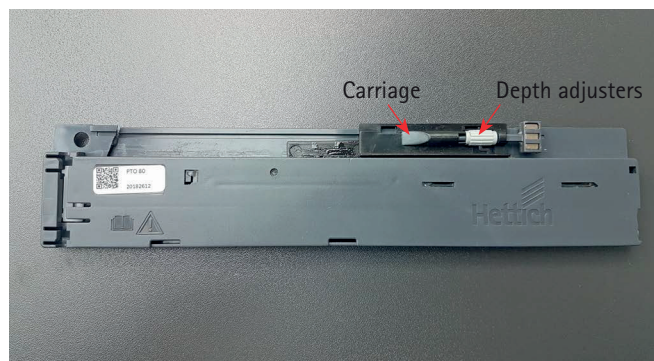
+/- 2.0 mm -> nominal length specific, total 4 mm.
Adjustment in +/- always possible.



Fault Analysis

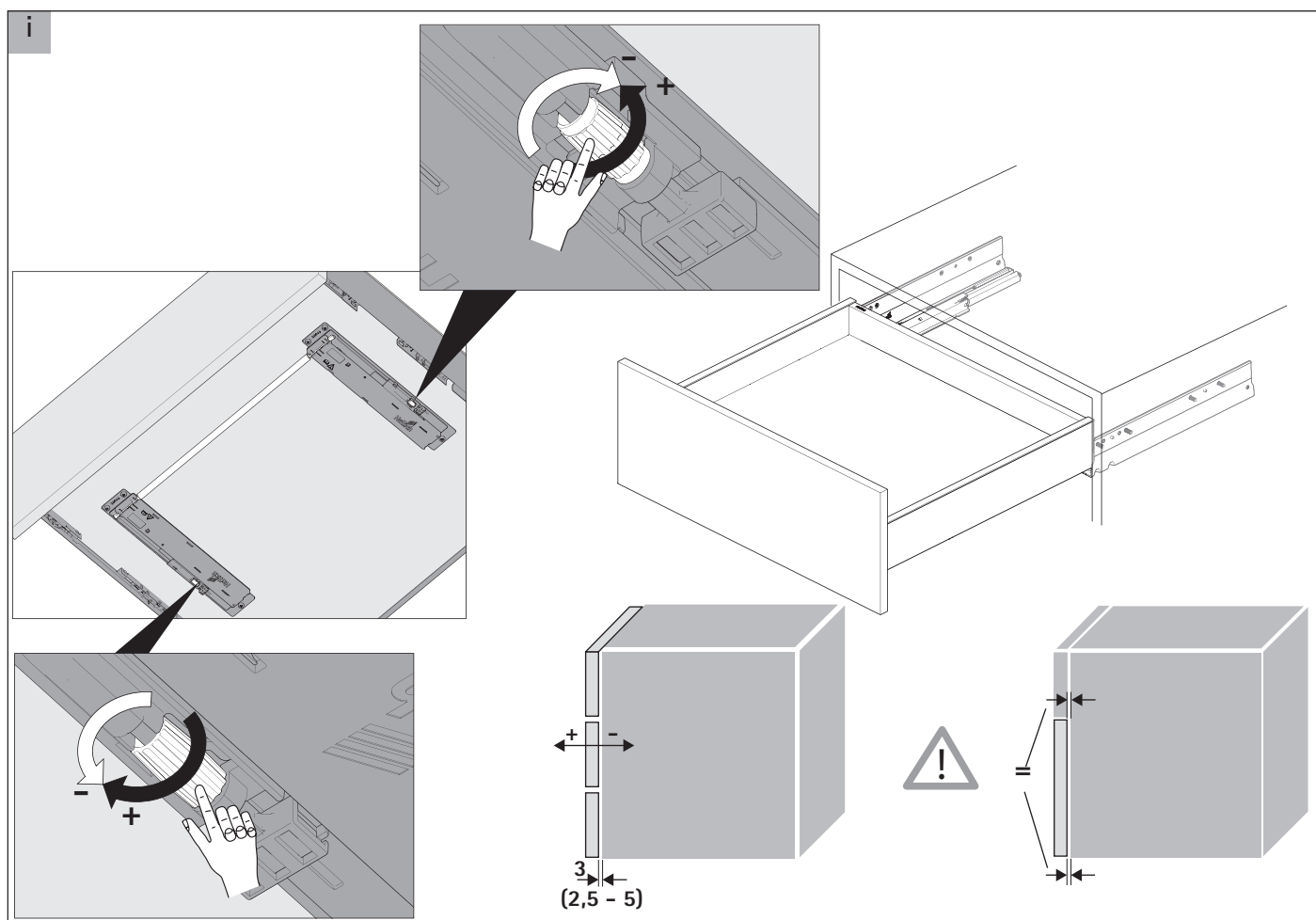
Push to open Silent (PTO) 2.0

Removing the drawer for closer analysis



Fault images	Operation	Possible cause	Remedy	Comment
Drawer will not open.	Pressing anywhere on the front panel.	Front panel reveal too narrow.	Increase front panel reveal.	
"Drawer will not open PTO on pressed side pushes open, passive side does not."	Pressing on one side of the front panel.	No synchronisation bar.	Fit synchronisation bar.	
"Drawer will not open PTO on passive side pushes open, active side does not."	Pressing on one side of the front panel.	Front panel reveal too narrow.	Increase front panel reveal.	
"Drawer will not open Drawer only opens when pressing on one side."	Pressing on one side of the front panel.	Depth adjusters are set unevenly / drawer is sticking.	"Unscrew depth adjuster on this side or drive it in on the other side. Depending on the system: correct lateral drawer maladjustment in the cabinet body (Actro 5D radial adjustment)."	"This can be identified by one front panel side responding ""more gently"". The carriage is too far forward when the drawer is closed."
"A loud clicking / activating noise can be heard on one side in the PTO. The drawer cannot be triggered on the side producing the clicking / activating noise."	Pressing on one side of the front panel.	Depth adjusters are set unevenly or the drawer is sticking.	"Unscrew depth adjuster on this side or drive it in on the other side. Depending on system: correct drawer alignment."	This can be identified by one front panel side responding "more gently."
Drawer not opened far enough.	Opening the drawer.	Wrong PTO assembly installed in terms of SELF CLOSING travel.	Install PTO Silent unit geared to weight of drawer.	
"The drawer immediately comes open and does not stay closed. The drawer stays closed the second time it is pushed in."	Drawer being placed on the runners for the first time and pushed closed.	"The synchronisation slide was moved into the triggering position when fitting the synchronisation bar. When activated on one side or unevenly, the synchronisation bar always keeps the synchronisation slide in the triggering position."	"Both slides must be tensioned simultaneously and as synchronously as possible with the synchronisation bar. Fit and close drawer."	This is not a fault.
The drawer comes out of the cabinet body again after every further attempt to close it.	Drawer being placed on the runners for the first time and pushed closed.	The synchronisation bar is jammed / too long.	"Check whether the synchronisation bar moves easily. Shorten synchronisation bar."	"The synchronisation bar must move easily in the PTOs. It must be possible to turn it (approx. 20°) and move it to the side (approx. 1-2mm)."
A PTO is triggered on one side and the drawer stays open by a short distance. The same fault pattern is repeated when the drawer box is pulled open and closed again.	Drawer being placed on the runners for the first time and pushed closed.	"The PTOs were moved into the triggering position in mounting the synchronisation bar. Depth adjusters set differently."	The drawer only has to be pushed closed once after the fault occurs.	
A rail is immediately pushed out and cannot be pushed in and locked again.	"Under base runner: Inserting the synchronisation bar."	Synchronisation bar is twisted, the activators are not parallel to each other.	Try a new synchronisation bar.	

Fault images	Operation	Possible cause	Remedy	Comment
The box is triggered on one side. And cannot be closed on both sides.	System drawers: fitting the drawer on the runner system.	Synchronisation bar is twisted, the activators are not parallel to each other.	Try a new synchronisation bar.	
The drawer is open.	Drawer being placed on the runners for the first time and pushed closed.	The drawer is not fully engaged.	Correctly engage drawer.	
The PTO units cannot be mounted on the runners.	Installation.	"The PTO set selected does not go with the runner's load class."	Select correct PTO Silent unit.	
The drawer can only be closed with a good push or a lot of force.	Closing the drawer.	Incorrect PTO load class / runner selected for chosen drawer size / weight.	Select correct PTO Silent unit.	
Drawer will not open.	Use with waste bins.	"A very tall front panel (waste bin systems) has been fitted Cause: pressing point is above the triggering zone."	Increase front panel reveal.	
"The box does not lock into place when pushed closed Retriggering guard does not work."	Closing the drawer.	The synchronisation bar is a little too long and not cut to length as specified.	Shortening synchronisation bar.	
The drawer comes out of the cabinet body again after every further attempt to close it.	Closing / opening the drawer.	"The synchronisation bar's adapters have not been clipped in parallel to each other. Front panel reveal is not set in synchrony."	Check.	





Load capacities for drawers and pull-outs (including net weight)

Drawers (ArciTech / proTech 2.0):

Frame depth ca. 300 mm to 500 mm = max. 40 kg
Frame depth ca. 650 mm = max. 60 kg

Pull-outs (ArciTech):

Frame depth ca. 300 mm to 400 mm (all widths) = max. 40 kg
Frame depth ca. 500 mm (up to 600 mm width) = max. 40 kg
Frame depth ca. 500 mm (from 800 mm width) = max. 60 kg
Frame depth ca. 650 mm (all widths) = max. 60 kg

Pull-outs (proTech 2.0):

Frame depth ca. 300 mm to 400 mm (all widths) = max. 40 kg
Frame depth ca. 500 mm (up to 600 mm width) = max. 40 kg
Frame depth ca. 500 mm (from 800 mm width) = max. 70 kg
Frame depth ca. 650 mm (all widths) = max. 70 kg



Load capacities for shelves

Adjustable wooden and glass shelves can bear weights up to 50 kg per square metre. This refers to an evenly distributed load (area load).

Note:

The maximum load for a wall unit is 70 kg, provided that the mounting fitting is fastened to a suitable load-bearing wall.



Load capacities for corner units

Carousel shelf „Le Mans II“

Maximum load per shelf = 25 kg

Carousel shelf „Planero“

Maximum load per shelf = 25 kg

Carousel shelf „semi-circle, laminate“

Maximum load per shelf = 25 kg

Carousel shelf „full-circle, laminate“

Maximum load per shelf = 20 kg



Load capacities for wire basket „cookingAgent“

Maximum load (total) = 16 kg



Load capacities for adjustable shelves „Tandem swivel“

Maximum load per shelf = 8 kg

Maximum load per shelf front rear side = 3 kg



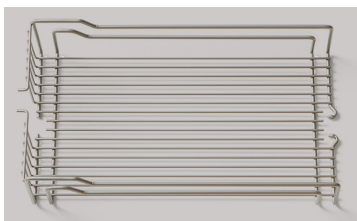
Load capacities for „pharmacy-style“ hook-in baskets

Note:

Refer to the section: Moving parts

Handling advice:

The apothecary pull-out must always be completely pulled out.



Metal basket

Maximum load per basket = 18 kg



Metal basket with removable trays

Maximum load per basket = 18 kg



Wire basket „Planero“

Maximum load per basket = 16 kg



Load capacities for adjustable shelves „Convoy“

Maximum load per shelf = 20 kg



Load capacities for adjustable shelves „Planero - Tal Gate“

Maximum load per shelf = 15 kg

Maximum load per shelf (total) = 75 kg



Load capacities for adjustable shelves „Planero - Tal Gate“

Maximum load per rear shelf = 20 kg
Maximum load per rear shelf (total) = 80 kg

Maximum load per front shelf = 4 kg
Maximum load per front shelf (total) = 15 kg



Design open shelves

Maximum load capacity per shelf = 10 kg/m



Tray

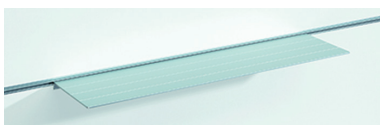
Maximum load = 15 kg

Safety information

Objects are to be set down in a stable position and secured against rolling or tipping.

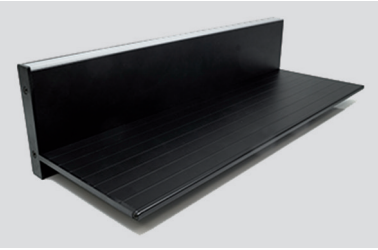
Devices that generate heat radiation or water vapour may only be used with the furniture door open and when the tray is pulled out.

It is imperative that the manufacturer specifications.



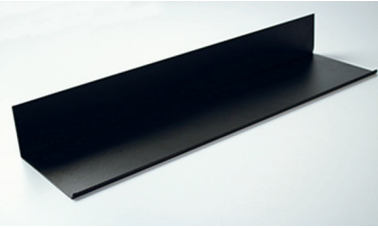
Storage for recess profile

Maximum load capacity = 4 kg



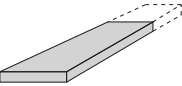
LED-Wall shelf

Maximum load capacity = 6 kg



Metal shelf

Maximum load capacity = 8 kg



Wall shelf 25 mm / 50 mm

Maximum load capacity = 4 kg/m



Load capacities for shelves for closing showcase (with side glass frame)

Glass shelf: 2.5 kg
Wooden shelves: 2.5 kg



Clothing lift

Maximum load capacity = 12 kg